

# 2025 - New Presbytery Windows and Essential Roof Repairs

With the help of a grants from the **National Churches Trust** in partnership with the **National Lottery Heritage Fund**, and the Benefact Trust, we've recently completed some essential repairs to our Presbytery roof and installed much needed new windows.

We're grateful to all our benefactors and supporters!



With thanks to National Lottery players.

## Phase 1: Presbytery Roof Repairs

Before:



Poor apical tile mortaring and cracked mortar at the chimney haunches, letting in water.



Work in Progress:



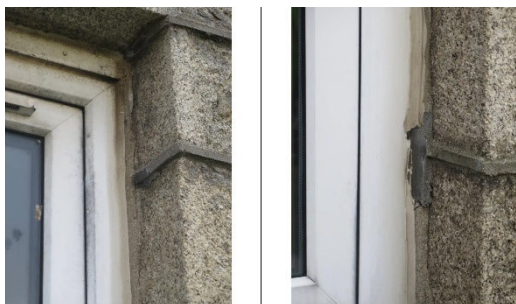
After:

Well-mortared chimneys and apical tiles.



## Phase 2: Presbytery Windows

Before:



Damaged sealant, decaying frames, condensation in the double-glazing cavity...



Work in Progress:



After:

Water-tight windows, and a better energy efficiency for this house which serves as a facility for parish socials, meetings and administration, as well as a residence for the ministers.

